



Kingpin



Kasel Salvage
Self-Propelled Salvage Crane
KINGPIN

Call Sign S6BC2



Lifting Capacity	500 tons
Modified	1993
Classification	GL + 100 A4 K
Gross Tonnage	2390
Pontoon	76 x 24 x 4.68 mtr.
Draft	2.00 mtr.
Propulsion	2 x 600 IHP Schottels

For raising heavy objects in the open sea the pontoon is equipped with two gin-tackles at the front-plate of the pontoon. This arrangement of tackles can work together with A-frame-jack and gives the pontoon a total lifting capacity of 1,000 tons. All winches are remote controlled from a command post in the bridge house.

A total pumping capacity of 1,350 tons per hour is attained by stationary and portable Diesel- and electric submersible pumps.

There is equipment for 4 divers on board, including above and below water cutting and welding gear.

Bridge equipped with Compass, ship-shore telephone, VHF, mobile telephone and winch controls.

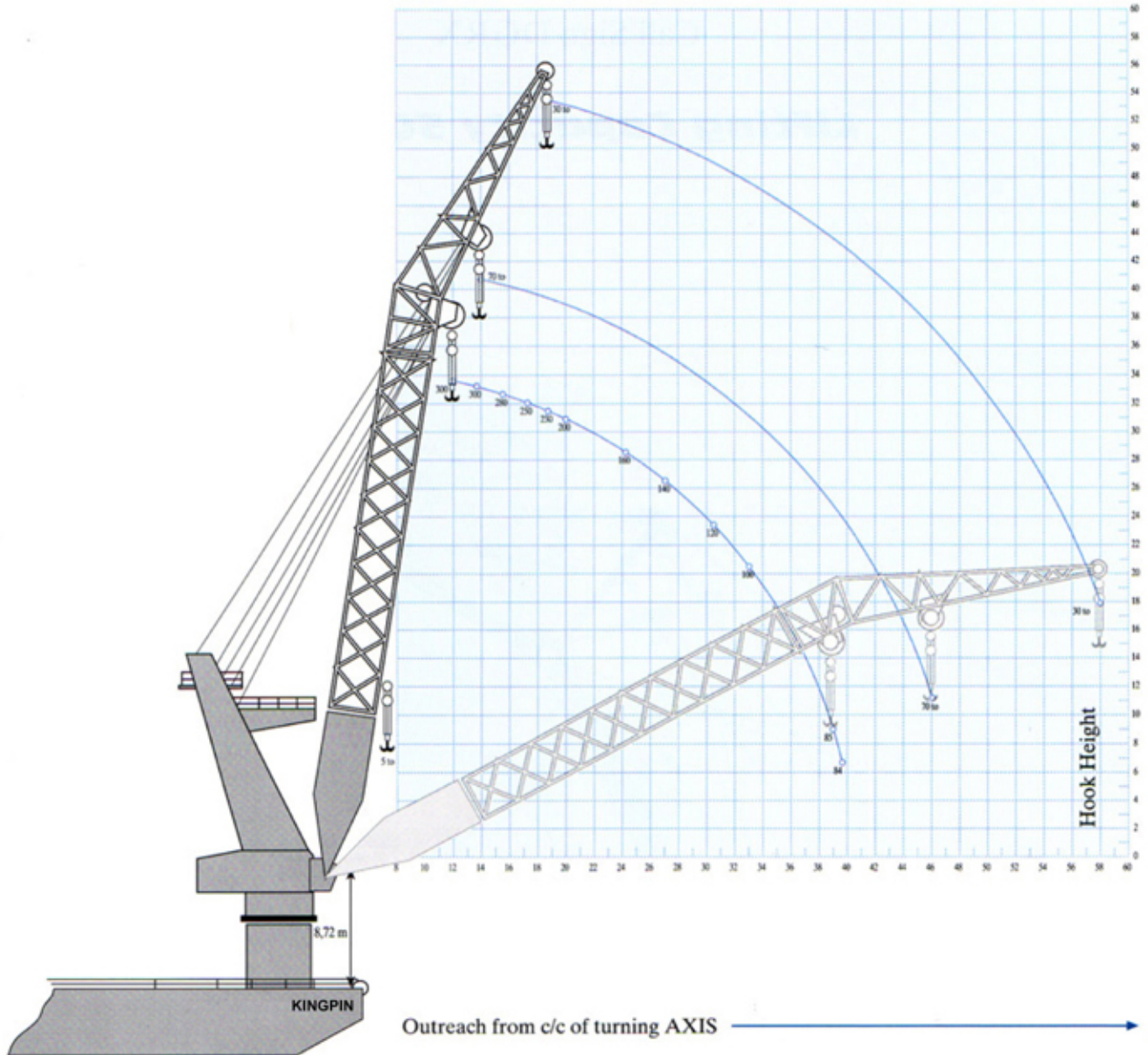
Extensive salvage gear to handle difficult salvage operations.

Capacity diagram for A-frame see overleaf.



Kasel Salvage

Offshore Revolving Crane **LIEBHERR Bos 300/5000**



Main Hoist	
SWL	Ansladung Outreach
300 to	min. 12.0 m (39 ft) max. 13.7 m (45 ft)
280 to	max. 15.2 m (50 ft)
250 to	max. 17.0 m (56 ft)
230 to	max. 18.5 m (61 ft)
200 to	max. 20.0 m (66 ft)
160 to	max. 24.3 m (80 ft)
140 to	max. 27.3 m (90 ft)
120 to	max. 30.4 m (100 ft)
100 to	max. 33.4 m (110 ft)
95 to	max. 36.5 m (120 ft)
85 to	max. 39.5 m (130 ft)
84 to	max. 40.0 m (131 ft)

1st Auxiliary Hoist	
SWL	Ansladung Outreach
70 to	min. 14.0 m (46 ft) max. 45.7 m (150 ft)

2nd Auxiliary Hoist	
SWL	Ansladung Outreach
30 to	min. 18.5 m (61 ft) max. 58.0 m (190 ft)

weight in metric tons



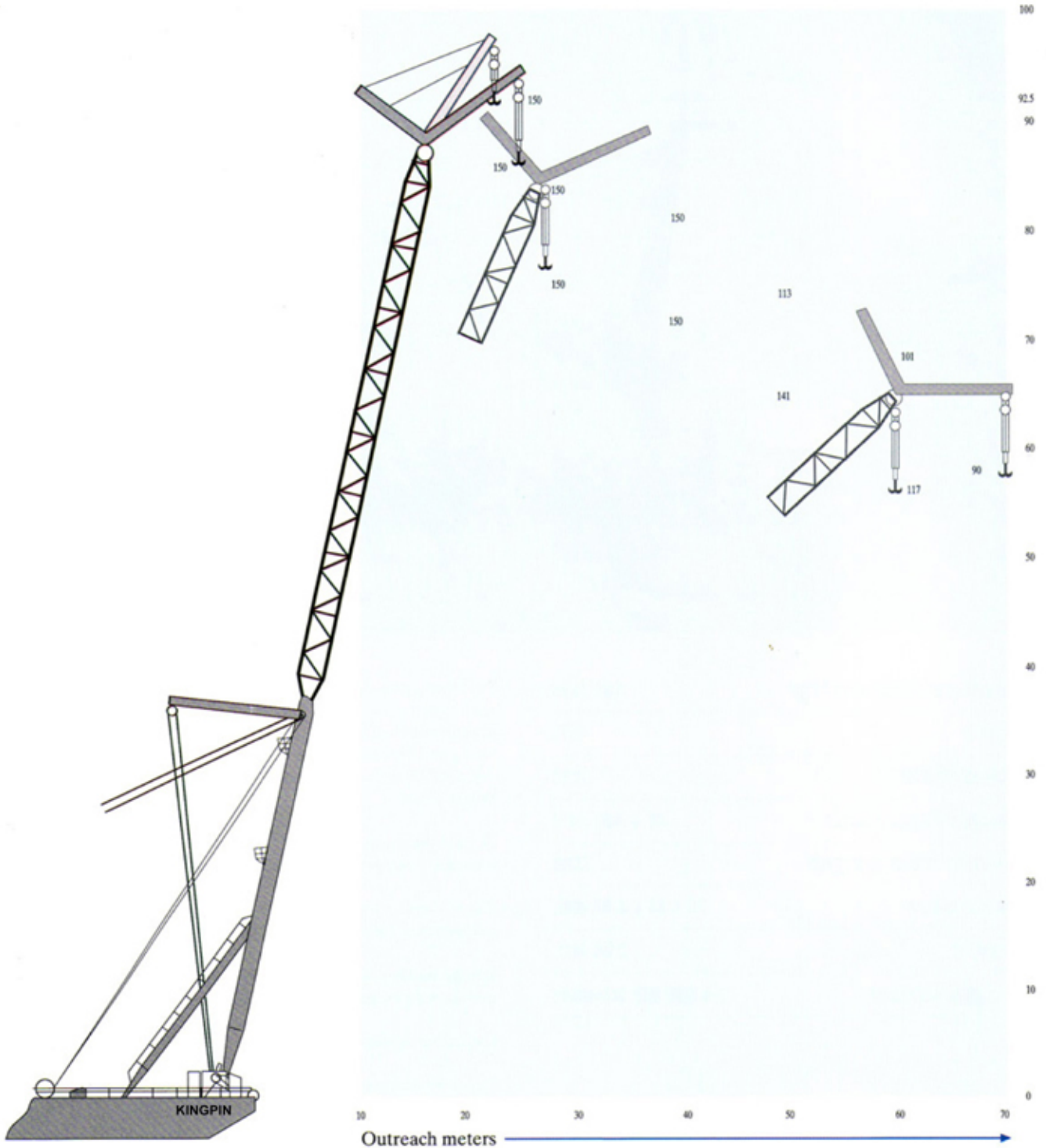
Kasel Salvage

Hook and Load Diagram for crane

KINGPIN

if equipped with Fly-Jib

for extended Outreach and Hook-Height





Kasel Salvage

Self-Propelled Salvage Crane

KINGPIN

Call Sign S6BC2

Lifting Capacity 500 to

