

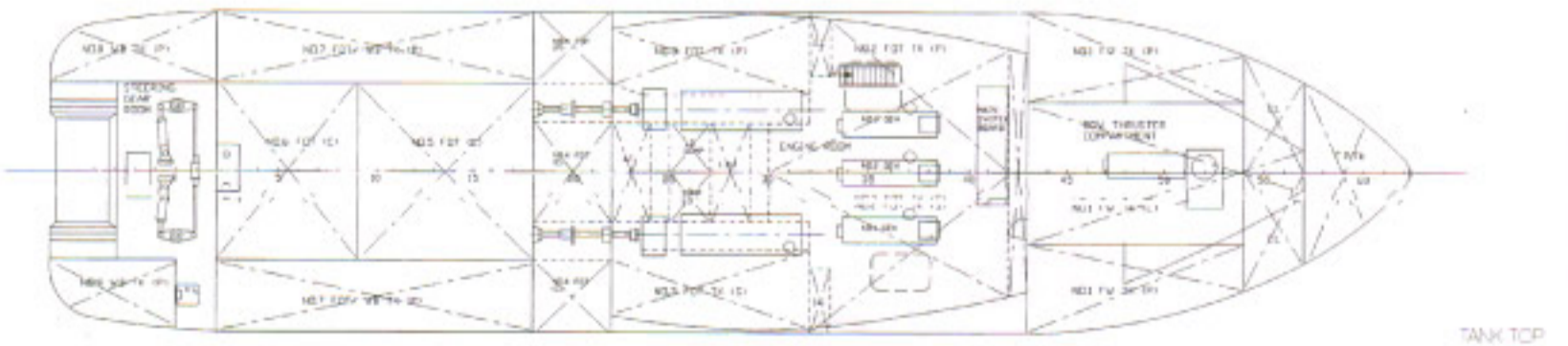
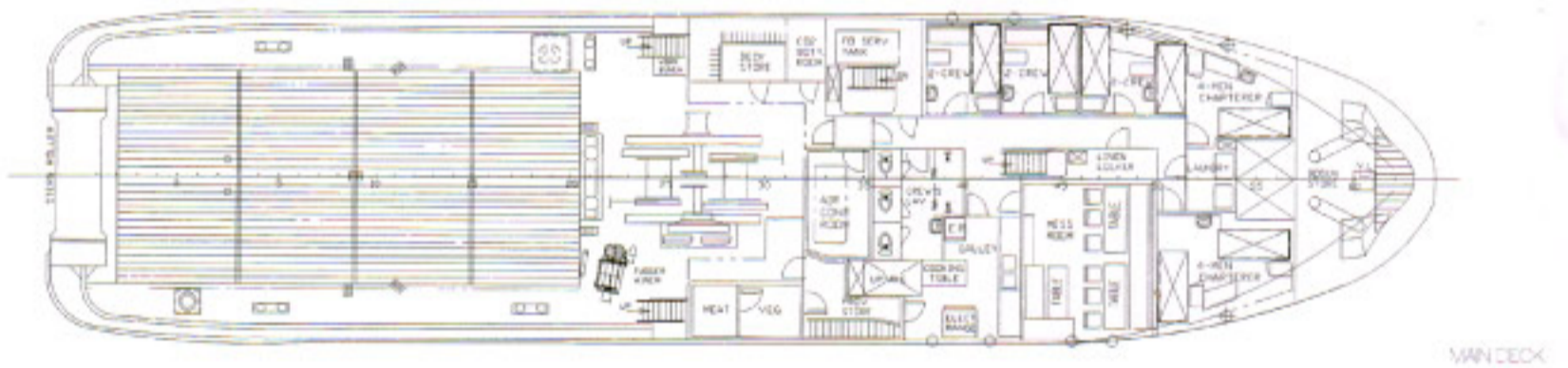
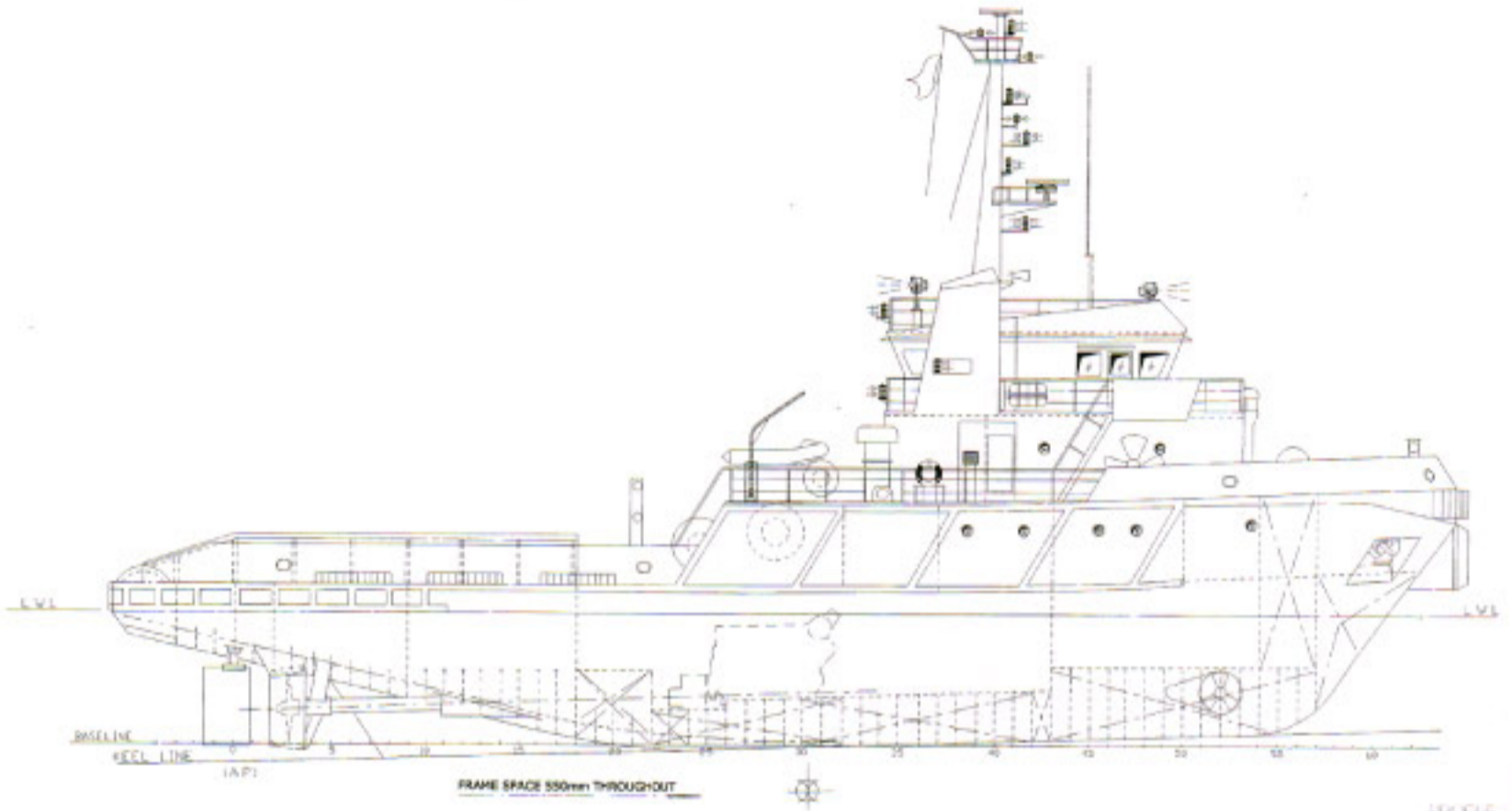


Helmut

2,800 BHP

HELMUT

2,800 BHP ANCHOR HANDLING TUG / UTILITY VESSEL



All details provided in this brochure are given without guarantee.

HELMUT

2,800 BHP Anchor Handling Tug / Utility Vessel

Revision: 001/Sep/2002

BUILT

Imamura Zosen, Kure, Japan, April 1982

CALL SIGN

9V5928

CLASSIFICATION

ABS Maltese Cross A1 E Maltese Cross AMS

DIMENSIONS

Length, overall: 39.00 m
Breadth, moulded: 9.00 m
Depth, moulded: 5.50 m
Summer Draft: 3.90 m
GRT: 445
NRT: 133

MACHINERY

Main engines: 2 x Yanmar T260-ST total 2800BHP at 700RPM-driving fixed pitch propellers in Kort nozzles
Bow Thruster: Kamome TC-30 DLN (3 tonnes thrust)
Yanmar 6HAL-HTN
Generator: 3 x 144 kw, 440v, 60hz alternators driven by Yanmar diesel engines 6KFL-HT

PERFORMANCE

Speed: 12 kts maximum, 11 kts at economical service speed with a consumption at about 7.2 tonnes/day.

RANGE

8200 nautical miles, free running

TOWING AND ANCHOR HANDLING

Bollard Pull: 33 tonnes
Winch: Chugoku Seiki Sengaku double drum waterfall winch
Towing drum 30 tonnes x 10 m/min
A/H drum 40 tonnes x 10 m/min
Brake capacity 50 tonnes
Ratchet capacity 70 tonnes
Drum Capacity: Towing 700 m x 38 mm
A/H 400 m x 38 mm
Stern Roller: 1.52 m x 3.86 m dia with portable vertical guide rollers on centreline
Guide Pins: 1 set, retractable, 30 tonnes SWL

DECK MACHINERY

Tuggers: 1 x 5 tonnes tugger winch
Capstan: 1 x 5 tonnes electro-hydraulic, midships
Windlass: Equipped with a single bow mooring, capacity 120m x 30mm wire
Crane: Hiab, 1 tonne at 5m.

CAPACITIES

Clear Deck Space: 12.65 m x 5.94 m = 75 Square metres
Deck Cargo: About 130 tonnes
Fuel: 270 tonnes
Potable Water: 88 tonnes
Ship's Stores: 6 cubic metres

ELECTRONICS

Radar: Furuno FRS48, x 48 miles, gyro stabilised
Auxiliary Radar: Furuno FR701, x 48 miles
Auto Pilot: Tokyo Keiki with Tokyo Keiki ES11 gyro compass
Echo Sounder: Furuno F836D with digital readout
Direction Finder: 1 x VHF, Tamayo type
Satellite Navigation: GPS
Communications: G.M.D.S.S. (Global Maritime Distress & Safety System) 2 x SSB, 2 x VHF, 2 x Inmarsat C 456303840 / 456303850, 3 x VHF (portable) 2 x SART, 1 x EPIRB, 1 x Navtex.

ACCOMMODATION

Officers and Crew: 4 x 1 berth
4 x 2 berths
2 x 4 berths
Total: 20 berths
1 x mess/rec.room
1 x galley
All living space fully air-conditioned.

MISCELLANEOUS

1. Wood sheathed main deck.
10. CO2 fixed smothering system fitted to the engine room.
2. Airman SW 55,300 cu. ft./min at 120 psi (8.5 cubic metres/min at 8.4 kg/Square centimetres) with discharge connections on deck port and starboard (Salvage /deck air compressor).
3. FRC, 6 man capacity with 2 x outboards
4. Sewage treatment plant.
5. Statutory life buoys, life jackets, pyrotechnics.
6. Welding machine.
7. Search light and deck flood lights.
8. P.A. System.
9. TV and Video.